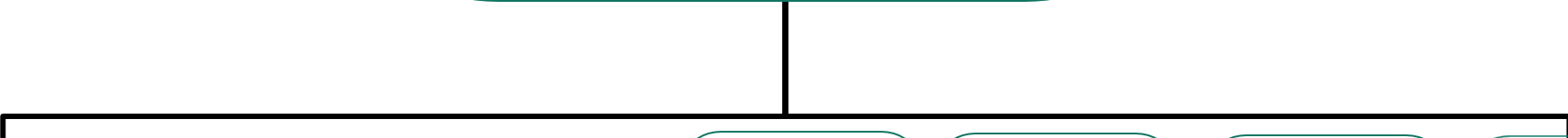


**Gillian Beasley**  
Chief Executive



**Fiona McMillan**  
Director of Law & Governance and Monitoring Officer for Peterborough and Cambridgeshire Councils

**Peter Carpenter**  
Corporate Director Resources

**Steve Cox**  
Executive Director for Place and Economy

**Wendi Ogle-Welbourn**  
Deputy Chief Executive  
Executive Director People and Communities Peterborough & Cambridgeshire

**Sue Grace**  
Director, Customer and Digital Services

**Amanda Askham**  
Director: Business Improvement & Development\

**Jyoti Atri**  
Director Public Health

This page is intentionally left blank